



GWAVACon

Get the Whole Story on Stubbing in GroupWise

July 13, 2009

Charles Taite

ct@gwava.com

Taylor Cochrane

tc@gwava.com

New in GroupWise 8

GroupWise 8 will include a new API that allows for an Archiving technology called “Stubbing”

What is Stubbing?



The concept of stubbing is to show an email present in your inbox (a “Stub”) but have the actual email content reside outside your email server.

Without Stubbing



GroupWise 8 Post Office
100 Gigabytes



Archive Server
500 Gigabytes



With Stubbing



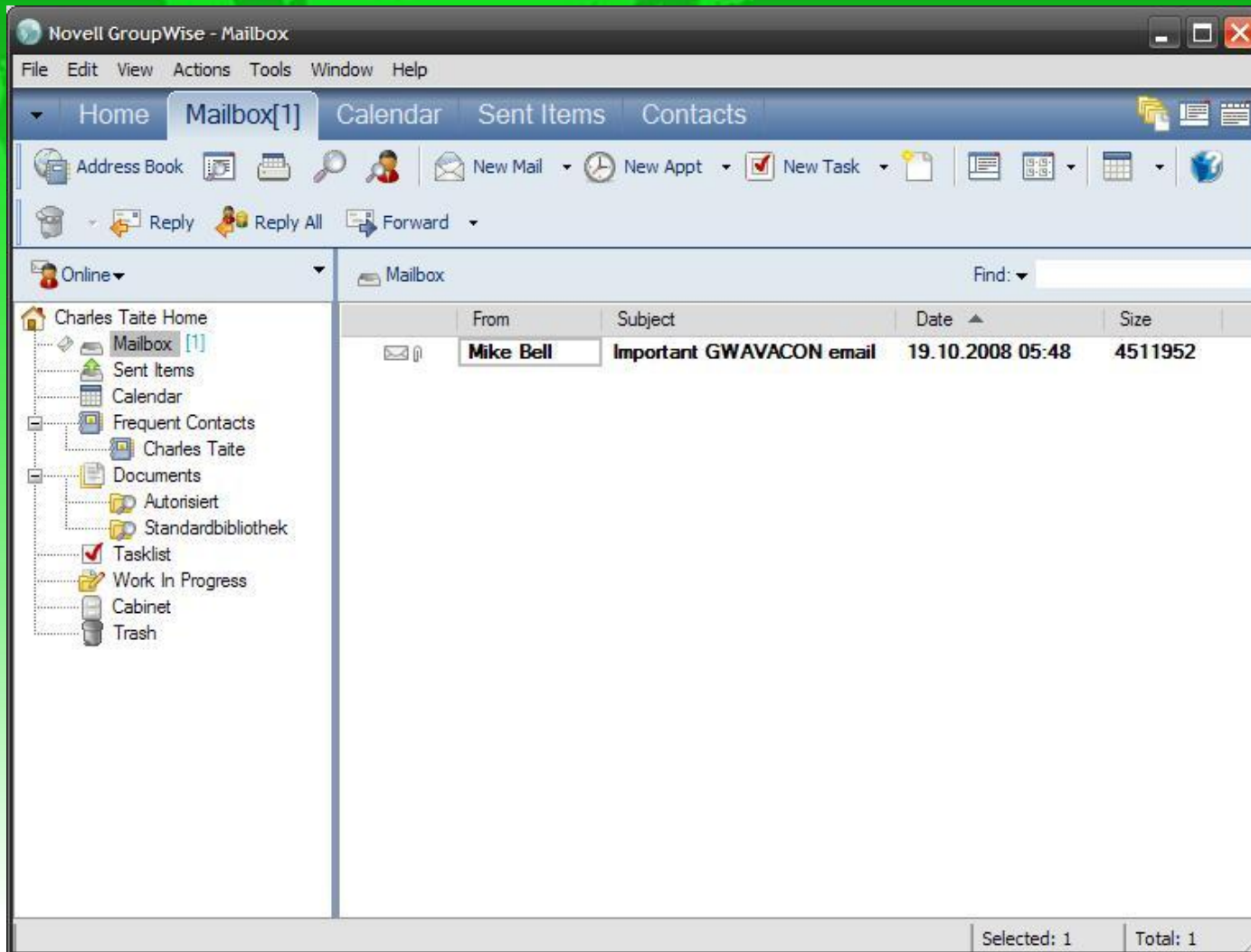
**GroupWise 8 Post Office
100 Gigabytes**



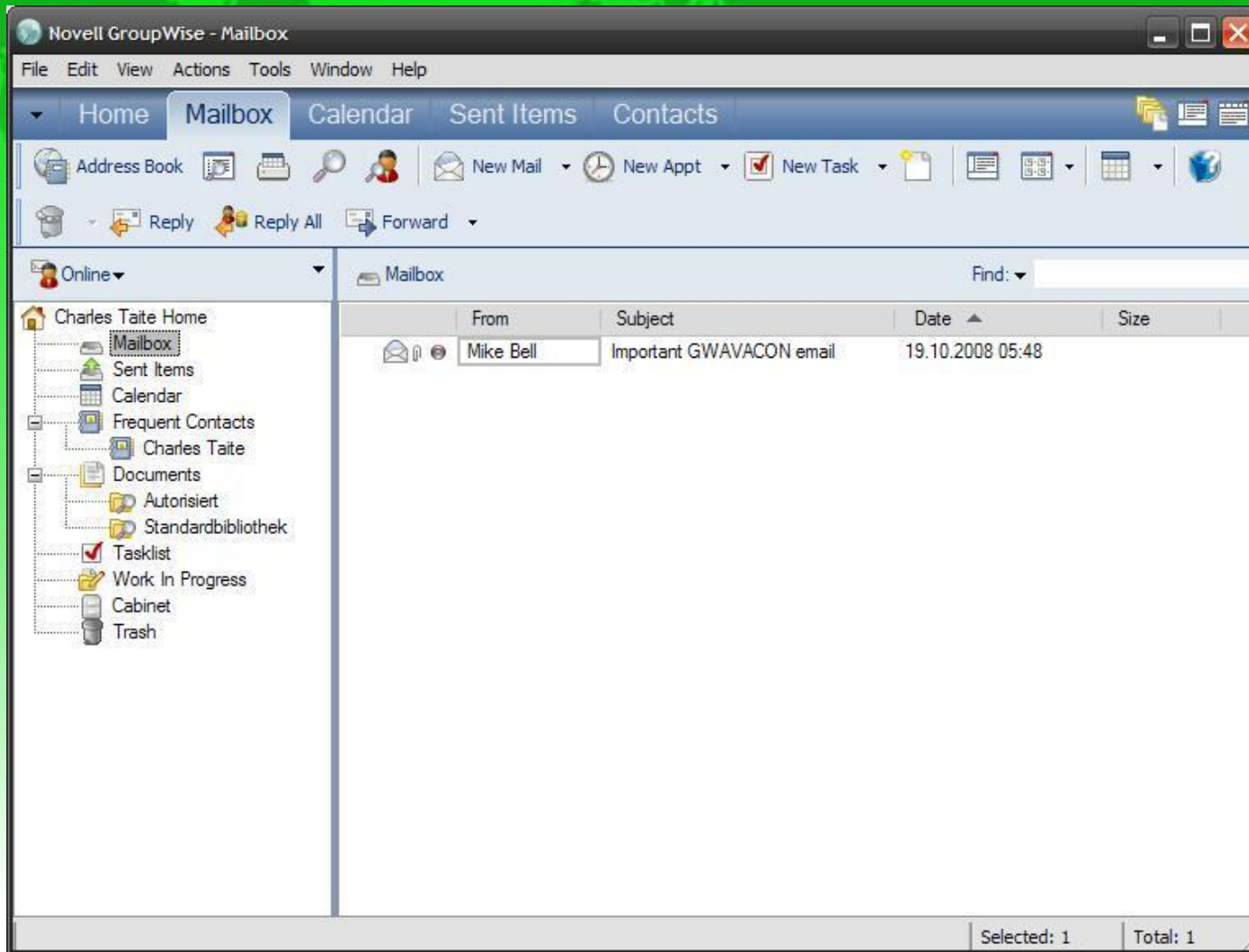
**Stubbing/Archive
Server - 500 Gigabytes**



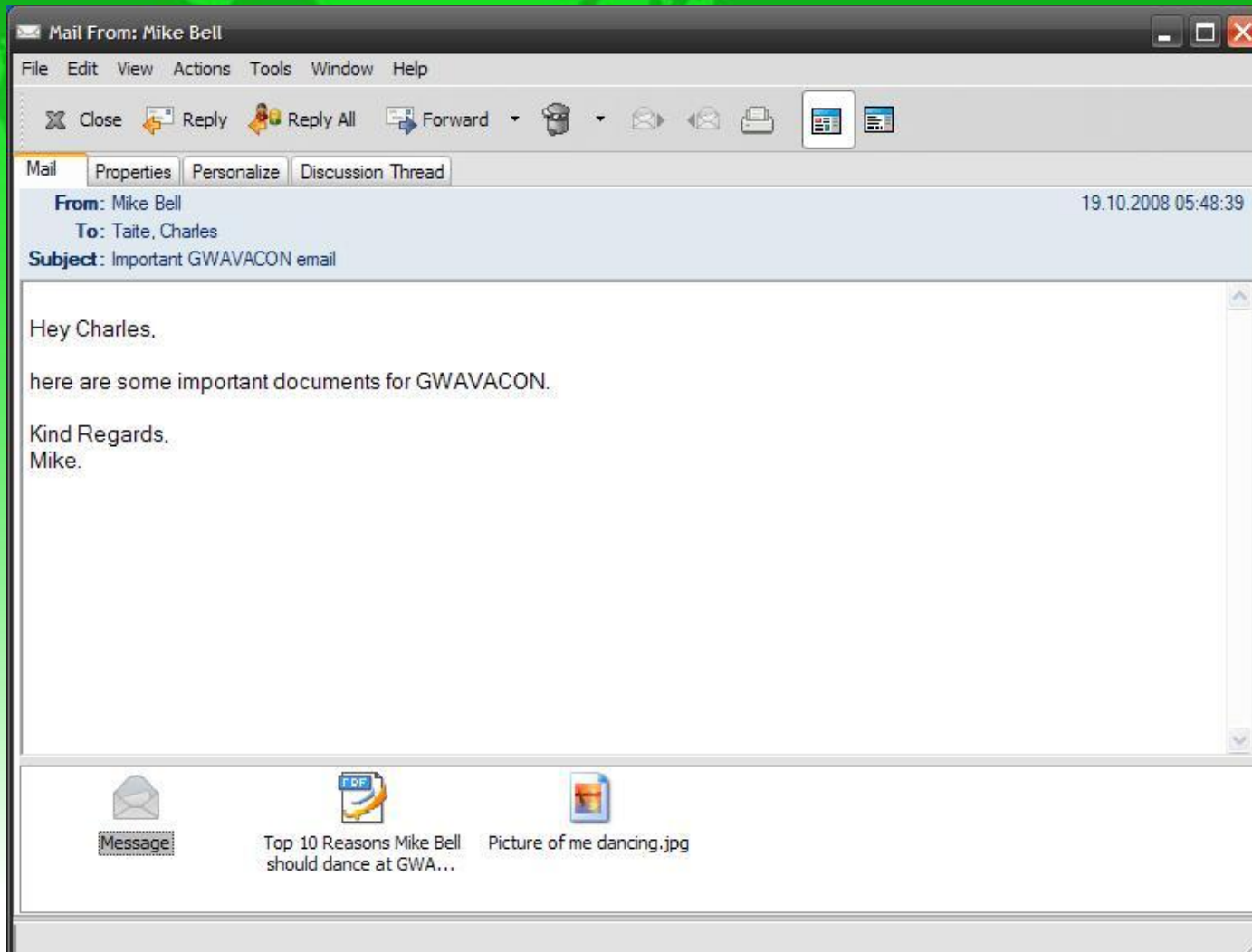
Before...



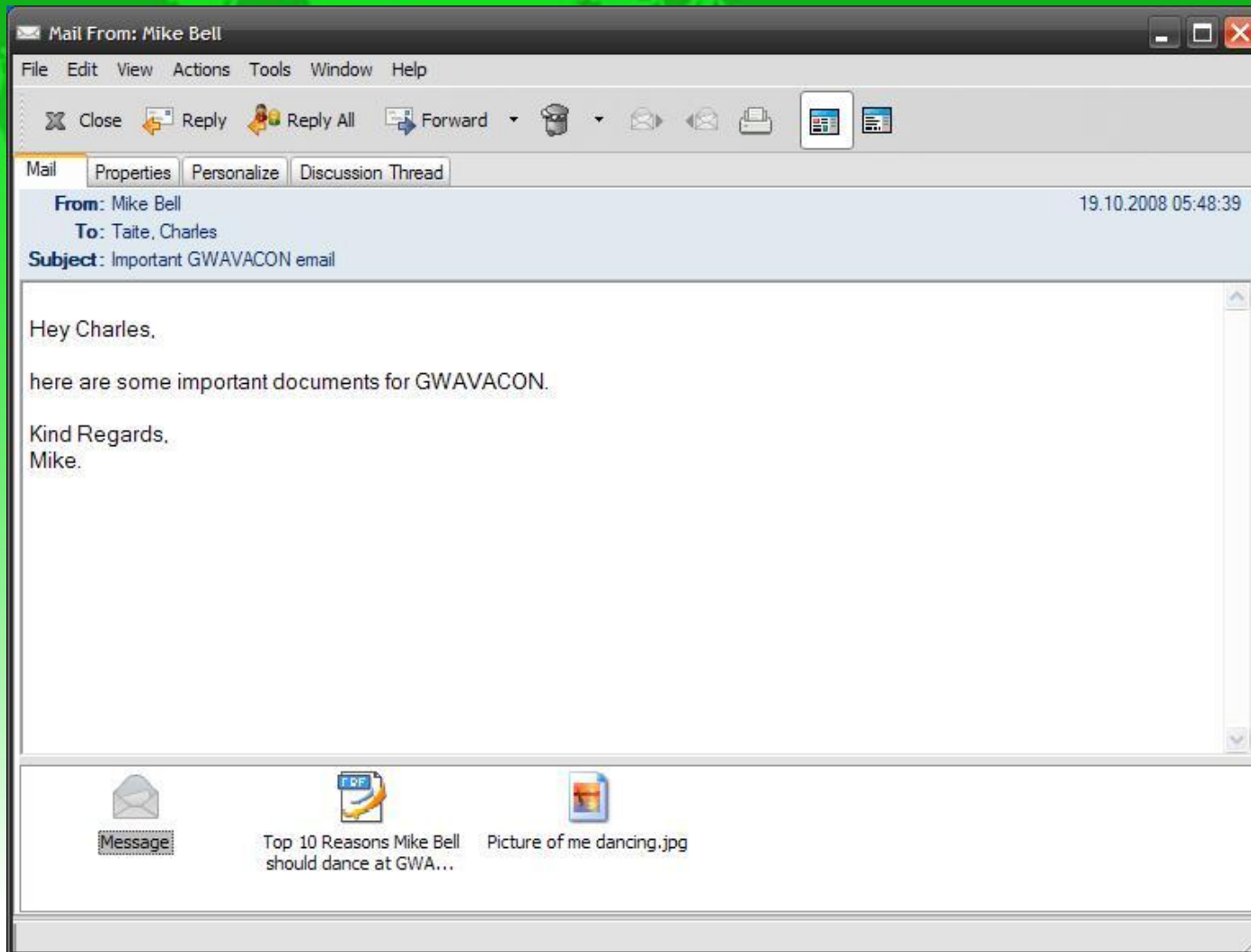
After...



Before...



After...



Why Stubbing?

- . Transparent integration of archiving solution
- . No separate login
- . No need for separate archiving client
- . Less end user training
- . Reduces Post Office storage
- . You can still work with a stubbed message

Why Not Stubbing?

- GroupWise 8 Windows Client Only (WebAccess, Linux, Mac and Mobility clients are not supported)
- . Stubbed mail only accessible “online” (you must be connected to both the GroupWise and Stubbing server, so offline caching mode will not work)
- . Stubbing only attachments not supported

What do we know?

- Stubbing has been used as an archiving method for other messaging platforms for quite some time.
- This has allowed us to assess the impact stubbing may have for GroupWise.

What do we know?

- . In the Exchange world, stubbing has gone from a miracle cure to a poison pill.
- . Months or years of stubs create search problems:
 - . Search efficiency is generally reduced
 - . Multiple searches (searching stubbed and unstubbed mail) increases search times
- . Performance: size matters, but so do item counts (i.e. 100,000 line items of stubs or e-mail messages still require resources to display)

What do we know?

. Microsoft is now recommending against full stubbing:

[http://technet.microsoft.com/en-us/library/cc671168\(EXCHG.80\).aspx](http://technet.microsoft.com/en-us/library/cc671168(EXCHG.80).aspx)

Or search for: **cc671168**

What Can We Learn?

- GroupWise is not Exchange, so we do not know if some or all of the issues will occur
- The GroupWise 8 stubbing API is new
- The API does not allow us to only stub the attachment. For now, we can only stub the entire message

What is GWAVA Doing?

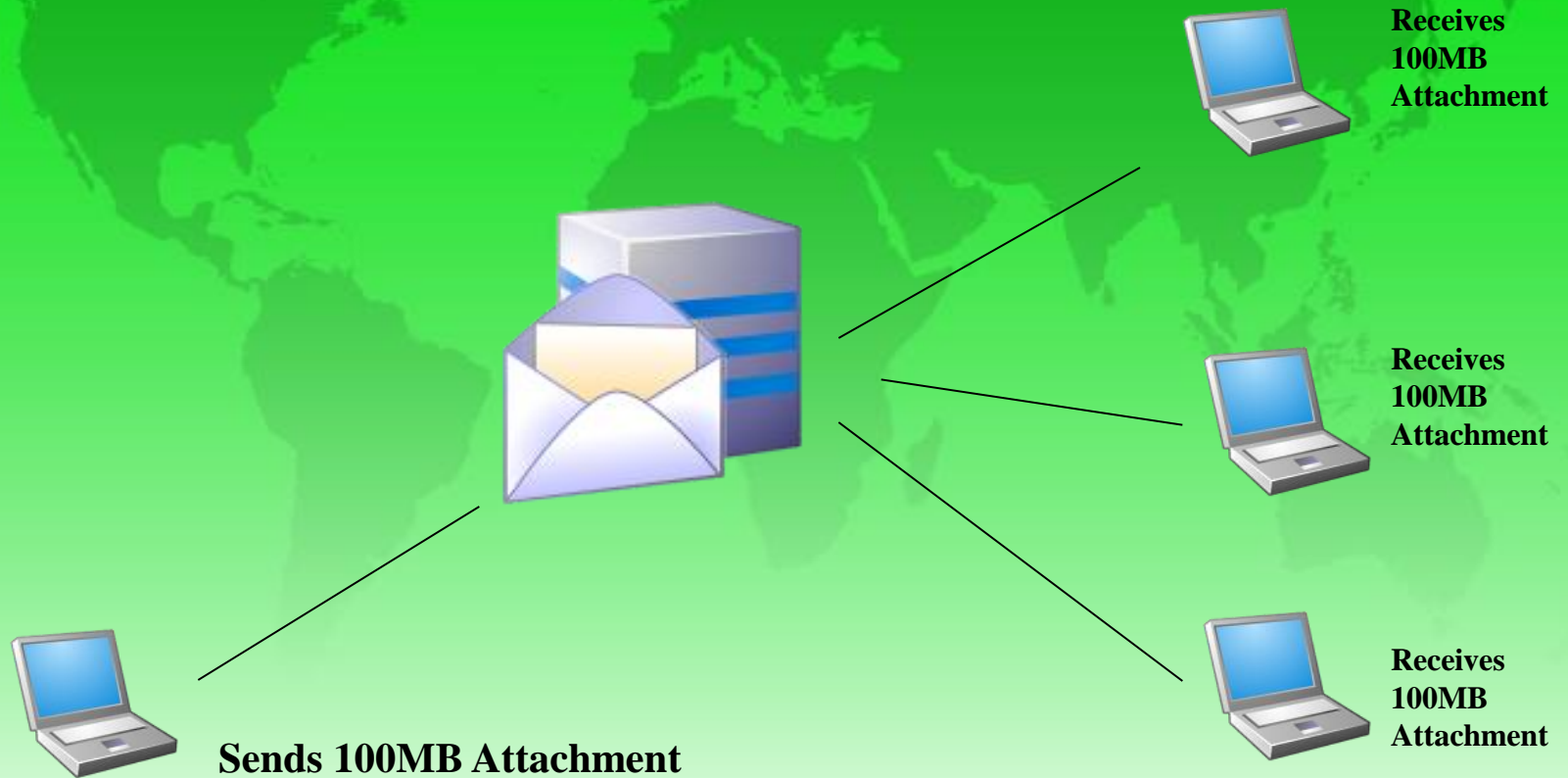
- There are many unanswered questions about GroupWise stubbing in the real world, and there may yet be a need to improve the stubbing API, so for now...
- GWAVA is giving away a stubbing-only version of Retain for free. See:

<http://www.gwava.com/products/retain/free-retain-stubbing-edition.html>

Best Practice Suggestion

- Continue to archive all e-mail on a daily basis
- Stub undeleted e-mail after 180+ days
- If necessary, only stub selected users
- Be aware of Single Instance Storage issues

Single Instance Storage



Stubbing in GroupWise

- .Stubbing IS Archiving
- .GW8 required
- .HP1 required & Sp1 Hp1 recommended
- .Cannot stub attachments only
- .Have a plan!
 - . Don't rush in
 - . Test in non production environment
 - . Cannot be reversed
- .Retain Stubbing edition is free



Thank You!



GWAVA

Unpublished Work of Beginfinite, Inc. All Rights Reserved.

This work is an unpublished work and contains confidential, proprietary, and trade secret information of Beginfinite, Inc. Access to this work is restricted to Beginfinite employees who have a need to know to perform tasks within the scope of their assignments. No part of this work may be practiced, performed, copied, distributed, revised, modified, translated, abridged, condensed, expanded, collected, or adapted without the prior written consent of Beginfinite, Inc. Any use or exploitation of this work without authorization could subject the perpetrator to criminal and civil liability.

General Disclaimer

This document is not to be construed as a promise by any participating company to develop, deliver, or market a product. Beginfinite, Inc., makes no representations or warranties with respect to the contents of this document, and specifically disclaims any express or implied warranties of merchantability or fitness for any particular purpose. Further, Beginfinite, Inc., reserves the right to revise this document and to make changes to its content, at any time, without obligation to notify any person or entity of such revisions or changes. All Beginfinite marks referenced in this presentation are trademarks or registered trademarks of Beginfinite, Inc. in the United States and other countries. All third-party trademarks are the property of their respective owners.