

# Upgrading to GroupWise® 8

**Danita Zanrè**

Consultant

[Caledonia/danita@caledonia.net](mailto:Caledonia/danita@caledonia.net)

**Novell®**

# Danita Zanrè

- Author of many GroupWise® books and articles, including the GroupWise 8 Upgrade Guide
- Long time GroupWise user and administrator (since WPO 2.0)
- Mother of three “lovely” children
- Learning to be a Linux Geek
- New Mac owner!

The background of the slide is a solid blue color with a pattern of diagonal lines in various shades of blue, creating a sense of motion and depth. The lines are more densely packed on the right side and become more sparse towards the left.

# Introduction

# Agenda

- Requirements for upgrade
- What's new in GroupWise 8
- Planning for the upgrade
- Upgrading domains
- Upgrading POs
- Upgrading gateways
- Upgrading clients

# Requirements for Upgrade

# Requirements for Upgrade

- Server Requirements
  - NetWare®
  - Linux
  - Windows
- Workstation Requirements
  - Windows
  - Mac
  - Linux



# Server Requirements

- All Servers: 32-bit/x86 processor
  - GroupWise 8 will run on 64-bit OS in 32-bit mode
- Any of the following, updated to the latest Support Pack
  - NetWare®
    - > NetWare 6.5 or OES
      - » NetWare 5.1, NetWare 6.0 unsupported
  - Linux
    - > SUSE® Linux Enterprise Server 10
    - > Novell® Open Enterprise Server 2 (OES2)
  - Windows
    - > Windows 2003 Server or Windows Server 2008

# Administration Requirements

- ConsoleOne® 1.3.6h or later is required to administer GroupWise® 8.
  - Linux or Windows.
- For ConsoleOne on Linux, you must have
  - X Window System version X11R6 or later
  - Java Virtual Machine (JVM) 1.5.
- For Windows administration
  - Windows XP/2003/2008
  - Novell Client™
    - > The Novell Client (4.91 SP3 or later) is required on any Windows machine running ConsoleOne or installing GroupWise agents/components.

# WebAccess/Monitor/Calendar Publishing Host Requirements

- For the Web Server running the WebAccess Application, Monitor Application, or the Calendar Publishing Host you will need one of the following:
  - NetWare 6.5 - Apache 2.0 plus:
    - > Tomcat 4.1 or later
    - > JVM 1.4.2 or later
    - > Jakarta Connector 1.2 or later
  - Linux - Apache 2.2 plus:
    - > Tomcat 5.0 or later
    - > JVM 1.4.2 or later
    - > ModProxy Module

# WebAccess/Monitor/Calendar Publishing Host Requirements

- Windows Server 2003/2003 R2 - Microsoft Internet Information Server (IIS) 6 or later plus:
  - Tomcat 5.5 or later
  - JVM 1.5 or later
  - Jakarta Connector 1.2 or later
- Windows Server 2008- Microsoft Internet Information Server (IIS) 7 or later plus:
  - Tomcat 5.5 or later
  - JVM 1.5 or later
  - Jakarta Connector 1.2 or later

# Workstation Requirements - Windows

- Any of the following Windows versions
  - Windows XP Professional on a Pentium 300 or higher with at least 128 MB of RAM
  - Windows Vista 1 GHz or higher and 1 GB RAM
  - Windows 2003 on a Pentium 300 or higher with at least 128 MB of RAM
- 60 MB of free disk space to install the Windows client/200 MB free on Vista

# Workstation Requirements - Linux

For Linux, the only supported platform is SuSE Linux Enterprise Desktop 10. We have tested the client on various OpenSuSE versions, and it seems to perform properly. That said, however, remember that the only supported platform is SLED 10. The client will run with either KDE or GNOME.

# Workstation Requirements - Mac

Interestingly, the Mac client seems to run on the most diverse versions of the operating system than either Windows or Linux! You can run the GroupWise 8 Mac client on:

- Mac OS 10.4 (Tiger)
- Mac OS 10.5 (Leopard)
- Mac OS X for Intel
- Mac OS X for PowerPC

# What's New in GroupWise 8

# New Features for GroupWise® 8 Administration

- Default Character Set
- Ability to set the maximum mailbox size to greater than 4Gb in Client Options.
- Ability to set the default MIME encoding character set in Client Options.
- Ability to designate an Internet Domain as being external. This causes messages to be routed via defined links and not automatically be sent via GWIA.

# New Features for GroupWise® 8 Administration

- Several default values settings to more closely match common practices. The settings changed are:
  - Network Type setting on the Domain and Post Office properties page has been removed
  - Tools | GroupWise System Operations | System Preferences on the Nickname Settings tab the "Auto-create on User Move" setting has been changed to "Prompt" and the Default Expire value is set to 30 days.
  - Log Settings panel for MTAs, POAs and Gateways the Max Log File Age has been updated to 30 days. Also, the Max Log Disk Space value has been changed to 100 Mb (102400 Kb).

# New Features for GroupWise® 8 Administration

- Several default values settings to more closely match common practices. The settings changed are:
  - Default Scheduled Events and Actions have been almost completely re-done. There are now 3 default events (Default Disk Check, Default Weekly and Default Daily) and 4 default actions (Default Mailbox/Library Structure Check, Default Mailbox/Library Structure and Content Check, Default Audit Report and Default Disk Check).
  - GWIA properties page on the Settings page under SMTP/MIME the default value for Maximum number of hours to retry a deferred message has been changed to 4 hours.

# New Features for GroupWise® 8 Administration

- The following Client Options default values have been updated :
  - Default Read and Compose Views; HTML instead of Plain Text.
  - Junk Mail Handling; auto-delete option will now be enabled.
- IDM Driver
  - More searches are available
  - Added a few more client options
  - Fixed several bugs
  - Preparation for GroupWise 8 changes ... new mapped attributes (City, etc.)

# New Features for GroupWise® 8

## GWIA

GWIA blocks rule generated forwarded messages

Delayed message notification



# Planning the Upgrade

# Planning the Upgrade

- Primary domain must upgrade first. You can:
- Upgrade existing primary
- Create new domain for primary
- Promote existing secondary to primary

# Schema Extension

- If you need to extend the schema upon upgrade, you will be prompted by the Windows installer.
- Linux Schema should not need to be extended
- Extending Schema can be accomplished through ConsoleOne® for new systems, or any time schema extensions are required.

# Upgrading Domains

# New Installation Routine

- Novell has created a new installation routine
  - There are no longer separate installation executables for the agents or the GWIA. In order to install this software you must run the setup.exe at the root of the NetWare/Windows GroupWise 8 installation media, or the install script at the root of the Linux GroupWise installation media

# Primary Domain Upgrades First

- Recover wpdomain.db file
- Install agents
  - new option to “Install the software files, but do not configure the agents
  - the new installation default on Windows is c:\program files\novell\groupwise server\agents
- Copy .dc files to domain directory
- Load agents

# Primary Domain Upgrades First

- Agent recovers wdomain.db and converts it to new version
- Use Novell's setup.exe Wizard for upgrade

# Special Linux Considerations

- All components on a particular server must be upgraded together

# Running More Than One MTA on the Same Server



- The new GroupWise 8 MTA opens a SOAP connection (for administrative purposes) on port 7161. If you intend to run more than one MTA on any particular server, you must set a unique SOAP port for the additional MTAs. This cannot be done in ConsoleOne, but must be configured in your MTA startup file. The default port is 7161. For each additional MTA you should set an alternative port. For example:
  - NetWare/Windows: `/soapport-7162`
  - Linux: `-- soapport 7162`

The background of the slide is a solid blue color with a pattern of diagonal lines in various shades of blue, creating a sense of motion and depth. The lines are most prominent on the right side and fade towards the left.

# Upgrading POs

# Upgrading Post Offices

- Domain must be upgraded first
- Install agents
  - new option to “Install the software files, but do not configure the agents
  - the new installation default on Windows is `c:\program files\novell\groupwise server\agents`
- Copy .dc files to post office directory
- Copy ofviews directory to post office

# Upgrading Post Offices

- Load agent
- Agent recovers wphost.db and converts it to new version

# Upgrading GWIA

# Upgrading GWIA

- Your GWIA cannot be upgraded to GroupWise 8 until the domain that owns it is upgraded to GroupWise 8.
- When using the GWIA as a POP3 or IMAP4 “client”, it is indeed a client. You cannot access a GroupWise 7 or earlier post office with the GWIA via IMAP4 or POP3, If it is attempted, you will see a “login failed: D058” in your GWIA log.
- On the other hand, if the GWIA is being used only for SMTP services, there are no issues with a mixed system.



# New GWIA Options of Note

- Delayed Message Notification
  - When mail going out the GWIA is delayed, the GWIA generates a “transfer delayed” status that is entered into the properties of the senders sent item. GroupWise 8 will allow you to configure your GWIA to send a “delayed message notification” to the inbox of the sender. This setting is found on the SMTP/MIME tab of the GWIA configuration in ConsoleOne. Check the box that says “Return Notification to Sender When a Message Is Delayed”.
- Rule-Generated Messages
  - You can now configure the GWIA to block either rule generated replies, rule generated forwards, or both.

# New GWIA Options of Note

- Internet Agent Web Console
  - As with the other agent Web Consoles, you can now control most GWIA settings directly from the Web Console. This makes it more important to put a user and password on your GWIA Web Console.
- Changes to Nicknames
  - "Expand distribution lists on incoming messages" is selected
    - > incoming messages sent to any group, including Nicknamed Distribution Lists, are delivered.
  - Unselect "Expand distribution lists on incoming messages" and use the GWIA startup switch `-nickgroup`
    - > only deliver to nicknamed groups

# Upgrading WebAccess

# Upgrading WebAccess

- The domain that owns the GroupWise GWINTER must have already been upgraded to GroupWise 8
- The post offices that the GroupWise WebAccess system services have all be upgraded to GroupWise 8

# Upgrading the GroupWise® Client

# What Clients?

- GroupWise® Windows Client
  - Auto-update
  - Auto-configure
  - Setup.exe
  - SetupIP
  - ZENworks®
- GroupWise X-Platform Client
  - Linux
  - Mac



# Upgrading Clients

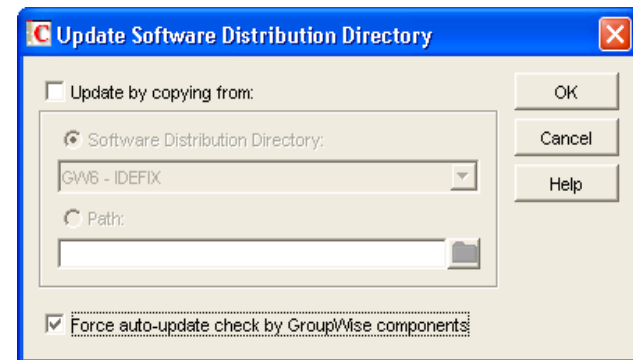
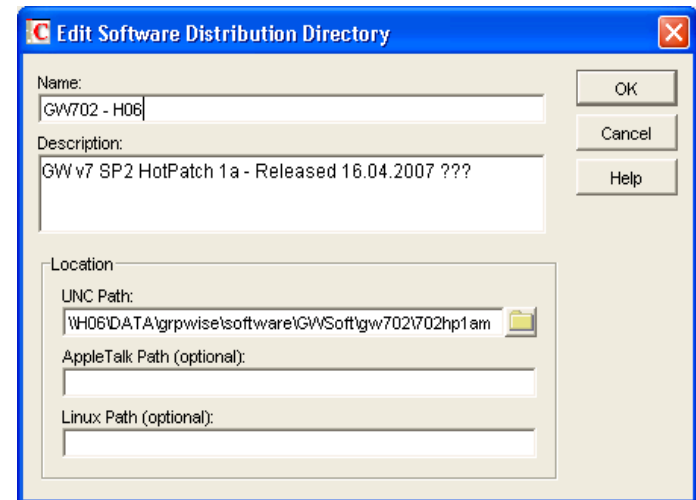
- Windows Clients
  - MSI installation
  - Still uses setup.cfg for original installation
  - Cannot “modify” the installation without removing client
  - GWTune (MSI editors) will be able to assist with this when available
- Linux Clients
  - Manually install RPM
  - Setup RedCarpet distribution
- Mac Clients
  - Manually install client

# Upgrading the GroupWise® Windows Client

- Controlling the upgrade
- Auto-update
  - POA checks for newer software when client logs in
  - Uses the SDD area, Build Number and Bump Number
- Auto-configure
  - Setup.cfg controls the settings of the client install
  - Setup.ini controls the language dialog
- Doing the upgrade
- Setup.exe / GroupWise.MSI
  - The actual install program
- SetupIP
  - Distribution through a web server
- ZENworks®
  - Application object

# Auto-Update

- Connect the PostOffice to a SDD area
- "Force auto-update check by GroupWise components"
  - POA checks client version used when logging in and compares to software on SDD
- Compares Build Number and Bump Number
  - [HKEY\_LOCAL\_MACHINE\SOFTWARE\Novell\GroupWise]
    - > "BuildNumber"="3060"
  - [HKEY\_LOCAL\_MACHINE\SOFTWARE\Novell\GroupWise\Client\5.0]
    - > "NewSoftwareBump"="2"



# Auto-Configure

- SETUP.CFG
  - > DefaultIPAddress=gw.caledonia.net
  - > ShowDialogs=No
  - [AutoUpdate]
    - > Enabled=Yes
    - > SetupIPEnabled=Yes
    - > ForceUpdate=No
    - > GraceLoginCount=0
    - > PromptUntilUpdated=Yes
  - [IntegrationApps]
  - [Languages]
    - > Default=Norwegian
    - > English=Yes
    - > Italian=Yes



# Auto-Configure

- SETUP.INI
  - [Startup]
    - > EnableLangDlg=Y
- For the GroupWise.msi create a groupwise.mst file
  - GWTuner
    - > Available under SDD\Admin\Utility\GWTuner
    - > Creates a groupwise.mst file with GroupWise Tuner
    - > Documentation on:  
[http://www.novell.com/documentation/gw7/gw7\\_admin/data/bqf1u5t.html#byuilx6](http://www.novell.com/documentation/gw7/gw7_admin/data/bqf1u5t.html#byuilx6)

# Running the Upgrade

- SETUP.EXE
  - File access
- GroupWise.MSI
  - File access
- SetupleP
  - Distributing the GroupWise® client via a web server
  - SDD\Admin\Utility\SETUPIP\WriteIP.exe creates SetupIP.exe
  - Copy necessary files to the web server
  - POA Auto-update can redirect client upgrades to web server
- ZENworks® Application Object for MSI
  - Install isscript1050.msi
  - Install GroupWise.msi

# Upgrading the GroupWise® Mac Client

- Replace the groupwise.dmg file

# Upgrading the GroupWise® Linux Client

- .rpm package
- Red Carpet v2.0 or later
- Configuration package
- Distribution through Installation Server
- Auto-upgrade
  - By YaST Online Update (YOU)
  - By Red Carpet / ZENworks®

# Upgrading GroupWise® Monitor

# Upgrading GroupWise® Monitor

- There is no “upgrade” from 5.5 EP Monitor
- Upgrade will preserve settings from GW 6.x/7.x Monitor
- Upgrade is essentially just reinstalling the software
- If you are not currently using GW Monitor, but intend to use the High Availability Agent for Linux, you will need to install GW Monitor



# Other Resources

- Novell® upgrade documentation:
  - <http://www.novell.com/documentation/gw8/index.html>



# New from Caledonia

Upgrading to GroupWise 8? Then you need:



*The Caledonia Upgrade Guide  
for GroupWise 8*

by Danita Zanrè

• <http://www.caledonia.net/gw8upg.html>

Use Coupon Code “GWAVACon” for 20% discount

**Novell®**

## **Unpublished Work of Novell, Inc. All Rights Reserved.**

This work is an unpublished work and contains confidential, proprietary, and trade secret information of Novell, Inc. Access to this work is restricted to Novell employees who have a need to know to perform tasks within the scope of their assignments. No part of this work may be practiced, performed, copied, distributed, revised, modified, translated, abridged, condensed, expanded, collected, or adapted without the prior written consent of Novell, Inc. Any use or exploitation of this work without authorization could subject the perpetrator to criminal and civil liability.

## **General Disclaimer**

This document is not to be construed as a promise by any participating company to develop, deliver, or market a product. It is not a commitment to deliver any material, code, or functionality, and should not be relied upon in making purchasing decisions. Novell, Inc. makes no representations or warranties with respect to the contents of this document, and specifically disclaims any express or implied warranties of merchantability or fitness for any particular purpose. The development, release, and timing of features or functionality described for Novell products remains at the sole discretion of Novell. Further, Novell, Inc. reserves the right to revise this document and to make changes to its content, at any time, without obligation to notify any person or entity of such revisions or changes. All Novell marks referenced in this presentation are trademarks or registered trademarks of Novell, Inc. in the United States and other countries. All third-party trademarks are the property of their respective owners.

